



WALL

**SHOWSCAPE™**  
GLAZED CERAMIC

 **daltile®**  
IMAGINE WHAT'S POSSIBLE™



Cover photo features Showscape™ Stylish White 12 x 24 using a mixture of chevron, square lattice and reverse dot tiles on the wall. Above photo features Showscape™ Stylish White and Soft Gray 12 x 24 in arabesque pattern on the wall.

## Turn Any Room into a Showpiece

When design meets innovation, this stunning series is the result. Showscape features Daltile's Visual Imaging™ technology to create striking designs using color dimension and depth, resulting in a multisensory experience of tone and texture. The engaging patterns in this collection are synchronized to flow together regardless of the tile direction. Combined with multiple color options, it provides a range of creative possibilities.

- **EASY DESIGN EXPRESSION**

- A variety of tones and patterns provide a multitude of combinations to satisfy any creative vision
- Pattern tiles are synchronized to flow together regardless of the tile direction, providing even more options that are easy to execute
- Jolly trim is available in coordinating solid colors to finish off the look

- **ENGAGE YOUR SENSES**

- Visual Imaging™ technology adds raised pattern texture that is pleasing to the touch
- Colors ranging from neutral to bold provide visual appeal to match any style



**POST-CONSUMER RECYCLED MATERIALS**



**PRE-CONSUMER RECYCLED MATERIALS**



**VISUAL IMAGING™**

All or select items within this series meet the requirements for these qualifications. For more information visit [daltile.com](http://daltile.com).

### USAGE

Floors

Walls

Countertops



W



WALL TILE (SHOWN IN ARABESQUE)



STYLISH WHITE SH09 (1)



ALMOND SH10 (1)



SOFT GRAY SH11 (1)



DEEP GRAY SH12 (1)



VIVID GREEN SH15 (2)



CRISP BLUE SH16 (2)

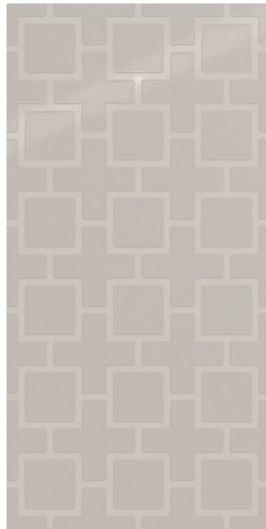


CURRANT SH17 (2)

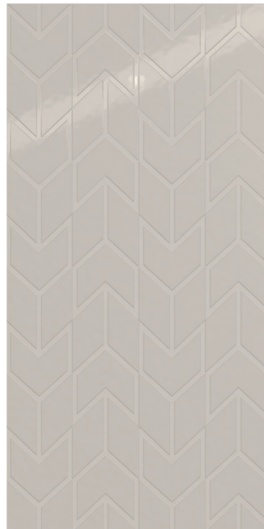
PATTERN OPTIONS\* (AVAILABLE IN ALL 7 COLORS)



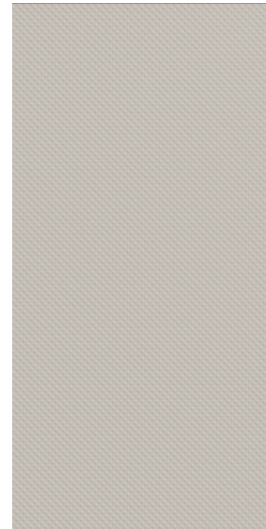
ARABESQUE (A)



SQUARE LATTICE (B)



CHEVRON (C)



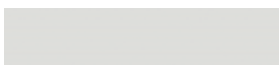
REVERSE DOT (D)



BRUSHSTROKE (E)

\* Group 2 colors are made-to-order on the pattern options.

WALL TILE AND JOLLY – COORDINATING SOLID COLORS



STYLISH WHITE SH09 (1)



ALMOND SH10 (1)



SOFT GRAY SH11 (1)



DEEP GRAY SH12 (1)



BLACK SH14 (2)\*



VIVID GREEN SH15 (2)



CRISP BLUE SH16 (2)




CURRANT SH17 (2)

\*Available in Jolly only  
 (1) and (2) indicate Price Groups, (1) being the least expensive.

**SHOWSCAPE™**

GLAZED CERAMIC

**SIZES**

			Thickness	Sq. Ft./ Carton	Pieces/ Carton
	12 x 24 Wall Tile	(12" x 24") (30.51 cm x 61.08 cm)	3/8"	16.00	8


**APPLICATIONS**

	Target DCOF wet	Suitable
Dry & Level – Interior Floor	N/A	
Wet & Level – Interior Floor	≥ 0.42	
Shower Floors (Residential or Light Commercial)	≥ 0.42	
Exterior Floor Applications (including pool decking & other wet areas with minimal footwear)	≥ 0.60	
Ramps & Inclines	≥ 0.65	
Walls/Backsplashes	N/A	✓
Countertops	N/A	
Pool Linings	N/A	

A DCOF value of ≥ 0.42 is the standard for tiles specified for level interior spaces expected to be walked upon when wet, as stated in ANSI A137.1-2012, Section 9.6. For more information about DCOF and the DCOF AcuTest™, visit [daltile.com/DCOF](http://daltile.com/DCOF).

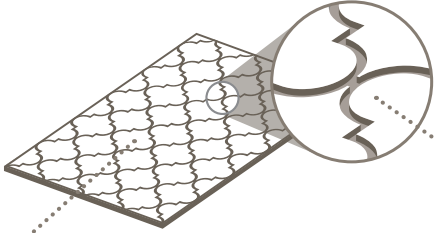
**APPLICATION NOTES:**

Suitable for exterior applications in non-freezing climates, when proper installation methods are followed.



## VISUAL IMAGING™

Innovative Visual Imaging™ Technology takes tile design to a whole new level. Through this new digital application process, Daltile achieves enhanced visuals and dynamic textures on tile surfaces.




**GREAT LOOKS YOU CAN FEEL**

Visual Imaging™ creates subtle height differences that enhance the tactile feel of the tile.


**NEW HEIGHTS IN TILE DESIGN**

With precise, digital application to specific areas of the tile, Visual Imaging™ creates depth and adds structure to achieve intricate visual effects that have a synchronized flow from tile to tile.

**TRIM**

Type	Number	Size	Pieces/ Carton
 12" Jolly	S-1/212J	1/2 x 11-15/16	12

**INSTALLATION**

Grout Joint Recommendation	Shade Variation
1/16" (1/8" when rectangular size is installed in a staggered brick-joint pattern; overlap should not exceed 33%.)	 Low (V1)

\* Use straight-joint only when using the same pattern.

**PERFORMANCE CHARACTERISTICS**

	ASTM#	Result
Water Absorption	C373	< 20.0%
Breaking Strength	C648	120-230 lbs
Scratch Hardness	MOHS	4.0-6.0
Chemical Resistance	C650	Resistant
Abrasion Resistance	C1027	N/A

For additional information on test results, visit us at: [daltile.com/information/TestResults](http://daltile.com/information/TestResults).

**NOTES**

Since there are variations in all fired ceramic and natural products, tile and trim supplied for your particular installation may not match samples. Final confirmation should be made from actual tiles and trim prior to installation. Manufactured in accordance with ANSI A137.1 standards.

For additional information refer to "Factors to Consider" at: [daltile.com/Factors](http://daltile.com/Factors).



DESIGNED TO HELP EARN LEED™ CREDITS. For more detailed information, visit [daltilegreenworks.com](http://daltilegreenworks.com).

7834 C.F. Hawn Freeway,  
Dallas, Texas 75217 | 1.800.933.TILE

To view the complete collection of Daltile® products and information, visit our website at [daltile.com](http://daltile.com).

 **daltile®**  
IMAGINE WHAT'S POSSIBLE™

©2017 Daltile (7/17)