



DECORATIVE

**RENDER METALS™**  
METAL

 **daltile®**  
IMAGINE WHAT'S POSSIBLE™



Cover and above photos feature Render Metals™ Iron Oblique 3 x 18 on the wall and Haut Monde™ Empire Black 12 x 24 on the floor.

## Energize Any Interior Wall

Create a unique appeal with the handcrafted strength and sophistication of Render Metals. The invigorating look of traditional metal can now be an essential element in even the most moisture-prone interior wall spaces. From hospitality to high-end residences, four striking patterns and four metallic shades make every project look custom.

- AN ELEMENT OF ELEGANCE
  - The invigorating look of traditional metal can now energize moisture-prone interior wall spaces such as bathrooms and showers
  - Achieve a high-end look that is also low maintenance
- MORE WAYS TO WOW
  - Available in four striking patterns with four metallic shades to complement both rustic and modern designs
  - Offered in an on trend longer size for maximum design impact



**MADE IN THE U.S.A.**

All or select items within this series meet the requirements for these qualifications. For more information visit [daltile.com](http://daltile.com).

### USAGE

Floors	Walls	Countertops
F	W	

WALL TILE



PEWTER RE96 – PANED



Close-Up



PEWTER RE96 – PLEATED



Close-Up



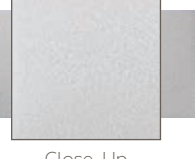
PEWTER RE96 – OBLIQUE



Close-Up



PEWTER RE96



Close-Up



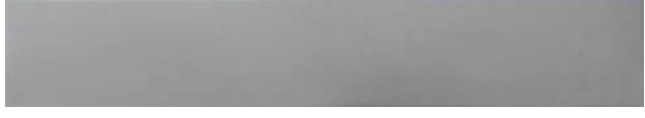
IRON RE97 – PANED



IRON RE97 – PLEATED



IRON RE97 – OBLIQUE



IRON RE97



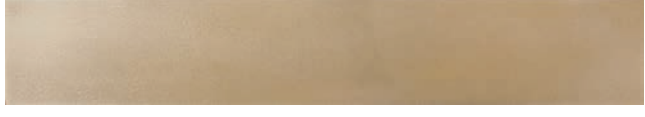
CLASSIC BRONZE RE98 – PANED



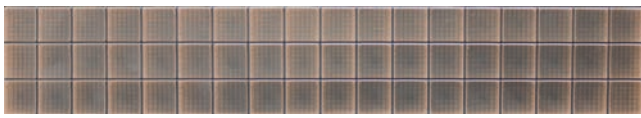
CLASSIC BRONZE RE98 – PLEATED



CLASSIC BRONZE RE98 – OBLIQUE



CLASSIC BRONZE RE98



OIL RUBBED BRONZE RE99 – PANED



OIL RUBBED BRONZE RE99 – PLEATED



OIL RUBBED BRONZE RE99 – OBLIQUE




OIL RUBBED BRONZE RE99

**RENDER METALS™**

## METAL

## SIZES

			Thickness	Sq. Ft./ Carton	Pieces/ Carton
	3 x 18 Wall Tile	(3" x 18") (7.62 cm x 45.77 cm)	5/16"	N/A	24

## APPLICATIONS

	Target DCOF wet	Suitable
Dry & Level – Interior Floor	N/A	✓*
Wet & Level – Interior Floor	≥ 0.42	
Shower Floors (Residential or Light Commercial)	≥ 0.42	
Exterior Floor Applications (including pool decking & other wet areas with minimal footwear)	≥ 0.60	
Ramps & Inclines	≥ 0.65	
Walls/Backsplashes	N/A	✓**
Countertops	N/A	
Pool Linings	N/A	

A DCOF value of ≥ 0.42 is the standard for tiles specified for level interior spaces expected to be walked upon when wet, as stated in ANSI A137.1-2012, Section 9.6. For more information about DCOF and the DCOF AcuTest™, visit [daltil.com/DCOF](http://daltil.com/DCOF).


## APPLICATION NOTES:

For interior use only.

\* Paned and Oblique not suitable for this application.

\*\* Product can be installed in wet areas such as backsplashes, bathroom walls and shower enclosures, but is not recommended in swimming pools or hot tubs as pool chemicals may harm protective coating.

## INSTALLATION

Grout Joint Recommendation	Shade Variation
1/8" (When rectangular size is installed in a staggered brick-joint pattern; overlap should not exceed 33%.)	 Medium (V2)

## NOTES

Render Metals™ is a cast metal collection and is permanently protected by Q-Seal™: Stain and scratch resistant, antimicrobial.

Due to the handcrafted nature of Render Metals, variations in structure can be expected and are intended to enhance the visual interest of this artisan product. Special care should be used in installation; see installation instructions for details.

Since there are variations in all fired ceramic and natural products, tile and trim supplied for your particular installation may not match samples. Final confirmation should be made from actual tiles and trim prior to installation. Manufactured in accordance with ANSI A137.1 standards.

Not for use on ramps. Water, oil, grease, improper drainage and certain footwear can create slippery conditions. Floor applications expected to be exposed to these conditions require extra caution in product selection.

For additional information refer to "Factors to Consider" at: [daltil.com/Factors](http://daltil.com/Factors).

Manufacturer Advisory: All tile is measured by the DCOF AcuTest™ method. Tiles with DCOF values <0.42 are not recommended for use in areas with wet or slippery conditions. For more information, see ANSI standard A137.1 section 6.2.2.1.10, available at [www.tileusa.com](http://www.tileusa.com).



DESIGNED TO HELP EARN LEED™  
CREDITS. For more detailed information,  
visit [daltilgreenworks.com](http://daltilgreenworks.com).



7834 C.F. Hawn Freeway,  
Dallas, Texas 75217 | 1.800.933.TILE

To view the complete collection of  
Daltil® products and information,  
visit our website at [daltil.com](http://daltil.com).



IMAGINE WHAT'S POSSIBLE™

©2018 Daltil (3/18)