

ec1<sup>TM</sup>

colorbody<sup>TM</sup> porcelain



NEXT<sup>TM</sup>  
by daltile®



NEXT™  
by daltile®



Photo features Barbican Unpolished 12 x 24 field tile on the floor and Barbican Textured in 12 x 24 with Barbican 6 x 24 decorative accent on the wall.

## ec1<sup>TM</sup> colorbody<sup>TM</sup> porcelain

Sleek, trendy colors and accents, multiple large format sizes, and choice of durable textured surfaces make EC1 a top choice for style and selection. This ColorBody Porcelain offers designers and architects an array of stylish options and is suitable for most exterior applications. EC1 is an eco-friendly product being produced using a high percentage of recycled materials.

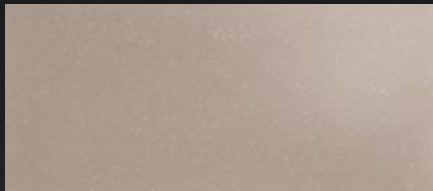
FIELD TILE



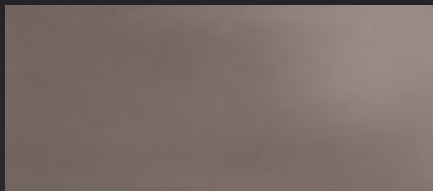
FARRINGDON J100



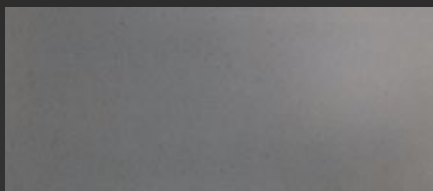
BANK J101



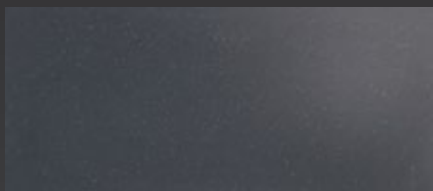
HOLBORN J102



DOCKS J103



CITY J104

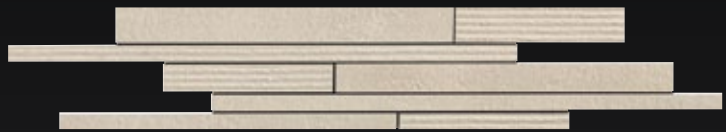


BARBICAN J105

DECORATIVE ACCENTS



FARRINGDON J100 6 x 24 Random Linear Decorative Accent



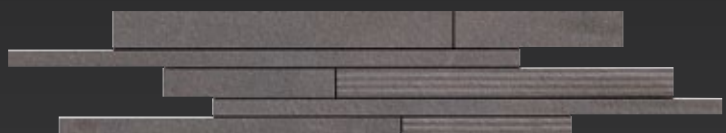
BANK J101 6 x 24 Random Linear Decorative Accent



HOLBORN J102 6 x 24 Random Linear Decorative Accent



DOCKS J103 6 x 24 Random Linear Decorative Accent

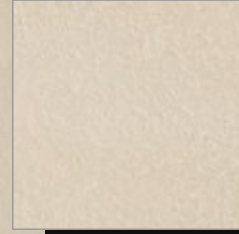


CITY J104 6 x 24 Random Linear Decorative Accent



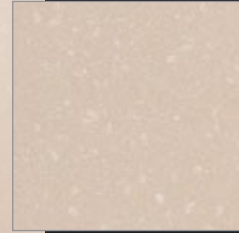
BARBICAN J105 6 x 24 Random Linear Decorative Accent

## SURFACES



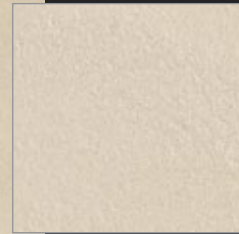
CLOSE-UP OF TILE

**POLISHED** Shown in Bank J101



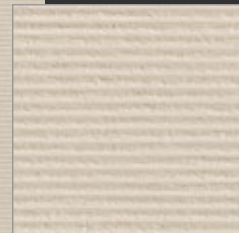
CLOSE-UP OF TILE

**HONED** Shown in Bank J101



CLOSE-UP OF TILE

**UNPOLISHED** Shown in Bank J101








CLOSE-UP OF TILE

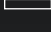
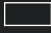
**TEXTURED** Shown in Bank J101

# ec1™ colorbody™ porcelain

## SIZES

			Sq. Ft. Per Carton	Pieces Per Carton
	24 x 48 Field Tile (Polished, Unpolished, Textured, Honed)	(24" x 48") (60.0 cm x 120.0 cm)	15.49	2
	24 x 24 Field Tile (Polished, Unpolished, Textured, Honed)	(24" x 24") (60.0 cm x 60.0 cm)	15.49	4
	12 x 24 Field Tile (Polished, Unpolished, Textured, Honed)	(12" x 24") (30.0 cm x 60.0 cm)	11.62	6
	4 x 24 Field Tile (Unpolished, Textured, Honed)	(4" x 24") (10.0 cm x 60.0 cm)	10.33	16
	6 x 24 Random Linear Accent	(6" x 24") (15.0 cm x 60.0 cm)	--	6

## TRIM

	Type	Number	Size	Pieces per carton
	Bullnose (Polished, Unpolished, Textured, Honed)	S-44F9	4 x 24	8
	Stair Tread (Polished, Unpolished, Textured, Honed)	S-6CF6	12 x 24	5



PRE CONSUMER  
RECYCLED MATERIALS



TRU-EDGE



EXTERIOR  
PRODUCT



0.5% or less water absorption

protected by design | **daltile**  
greenworks™  
ENVIRONMENTAL LEADERSHIP THAT WORKS

Designed to help earn LEED™ Credits.

At Daltile, we help make it easier for you to earn points toward LEED™ certification so you don't have to compromise your design for any reason. We use recycled materials in many of our products and have multiple manufacturing facilities providing the potential to be within 500 miles of your projects. For detailed information, visit [daltilegreenworks.com](http://daltilegreenworks.com)

APPLICATION	INTERIOR			EXTERIOR	
	Residential	Light Commercial	Commercial	Residential	Commercial
Floors/Patios	✓	✓	✓*	✓*	✓**
Walls/Backsplashes	✓	✓	✓	✓	✓
Countertops	✓	✓	✓	✓	✓
Pool Decking	✓**	✓**	✓**	✓**	✓**
Pool Lining	✓	✓	✓	✓	✓


\* Unpolished and Textured surfaces only

\*\* Textured surface only

Textured Surface: Suitable for pool decks and patios in freezing and non-freezing climates when proper installation methods are followed.

Unpolished, Polished, & Honed: Suitable for exterior walls in freezing and non-freezing climates when proper installation methods are followed.

## INSTALLATION

Thickness	Grout Joint Recommendation	Shade Variation
7/16" (11 mm – Unpolished, Textured & Honed)	1/8" (3/16" when rectangular sizes are used in a staggered brick-joint pattern, where the overlap does not exceed 33%)	 Medium (V2)
3/8" (10 mm – Polished)		

## TEST RESULTS (Unpolished and Textured Only)

	ASTM#	UNPOLISHED	POLISHED	HONED	TEXTURED
Water Absorption	C373	< 0.5%	< 0.5%	< 0.5%	< 0.5%
Breaking Strength	C648	> 400 lbs	> 400 lbs	> 400 lbs	> 400 lbs
Scratch Hardness	MOHS	7.0	7.0	7.0	7.0
Chemical Resistance	C650	Resistant	Resistant	Resistant	Resistant
Coefficient of Friction	C1028	Wet: ≥ 0.60 Dry: ≥ 0.70	Wet: ≥ 0.50 Dry: ≥ 0.60	Wet: ≥ 0.50 Dry: ≥ 0.60	Wet: ≥ 0.80 Dry: ≥ 0.80

## NOTES

Special care should be taken when grouting with dark pigmented colors. A grout release is recommended to prevent finely powdered pigments from lodging in the pores of the tile surface.

Special care needs to be given when installing tiles 20" and larger. Please refer to [www.daltile.com/LargeTiles](http://www.daltile.com/LargeTiles) for information.





ec1™

colorbody™ porcelain



SCAN QR CODE  
FOR PRODUCT  
INFORMATION.

Get a QR Code  
reader at  
[get.daltile.com](http://get.daltile.com)

 **daltile®**

**DESIGN WITH CONFIDENCE™**

7834 C.F. Hawn Freeway, Dallas, Texas 75217  
1.800.933.TILE | [DALTILE.COM](http://DALTILE.COM)

©2012 Dal-Tile Corporation (2/12) SSDTNXTECI